

CLIMAX

METAL PRODUCTS COMPANY



CLESCO BEARINGS



Pillow Block, Flange Mount and Sleeve Bearings

ISO 9001:2008

QUALITY MANAGEMENT SYSTEM



BEARING SELECTION FACTORS

We recommend that testing be done in the actual operating environment to determine if a certain bearing unit is suitable for the application. Many variations can occur such as temperature, RPM, type of shafting, shock loads and support structures.

BALL BEARING UNITS

Note that all ball bearing units are pre-lubricated and made to ABEC-1 tolerances. The wide inner race locks securely to the shaft with set screws. A neoprene seal keeps contaminants out and allows use in wet or dry environments. Tolerates temperature range -30° to 200° F.

Load ratings for ball bearing units are based on the ball bearing insert in each unit. The dynamic load rating capacity (Lbs.) is the maximum constant radial load that a bearing can support for one million revolutions @ 33 1/3 RPM for 500 hours. Static load capacity (Lbs.) is the maximum static load (non-rotating shaft) that a bearing can support without causing permanent deformation.

Maximum speed ratings are based on light loads and reflective of bore sizes:

1/2"=6000 RPM, 5/8"=5000 RPM, 3/4"=4500 RPM, and 1"=3500 RPM

UHMW-PE AND BRONZE SLEEVE BEARING UNITS

Sleeve bearings do not have moving parts and assure a low friction, smooth motion between two solid surfaces. Load capacities are expressed as a "PV" factor. To identify the "PV" factor, multiply "P" (maximum pressure in PSI on the bearing surface) x "V" (maximum sliding velocity in Surface Feet Per Minute on the shaft). The PV factor should not exceed rated max PV.

To Calculate, use the following formula:

$P = \text{Bearing Load} / \text{Bearing Diameter} \times \text{Bearing Length}$

$V = \text{Shaft Diameter} \times \text{Shaft RPM} \times 0.262^*$

*0.262" is the constant used for sleeve bearings

BEARING "BEST MATCH" INTERCHANGE

	Lutco	Peer	POBCO	Randall
PBPS-BL-Series	SP4_FLMXYA###RR Series	FHSPRZ200 Series		
PBPS-BR-Series				EB-U_S##-HA Series
PBSS-UH-Series			BBU-SS Series	
F2PS-BL-Series	##PBR Series	FHSR200-4X700 Series		
F2PS-BR-Series				AN-U_-S##-FA Series
F2SS-UH-Series			FAU-SS Series	

Please note:

_ indicates a letter should be specified based on size and # indicates a number should be specified based on size

Bearing Selection:

Note after matching the bore size user should verify all critical dimensions as variations exist from manufacturer to manufacturer.

DISCLAIMER: Please note that dimensional differences may exist from manufacturer to manufacturer. While size may vary slightly, in no way does this effect form, fit or function. For exact product specification, please contact the factory at 1-800-542-6552.

WARRANTY: Clesco, a wholly owned subsidiary of the **Climax Metal Products Company**, warrants that all parts listed in this catalog meet the size and material specifications within. Any non-conforming product will be replaced or the purchased price refunded at the Company's option. The user is responsible for determining the suitability of a part for a particular application and performance. No employee of Clesco or its agents has the authority to represent these products for a particular application or use. Clesco's liability is limited to the price of the part and neither Clesco nor the seller's liability shall exceed the price of the part.



PILLOW BLOCK

Ball Bearing, Die-Cast Housing, Rigid Type PBDC-BL - Series	Page 4
Ball Bearing, Pressed Steel Housing, Self-Aligning, Standard Type PBPS-BL - Series	Page 4
Ball Bearing, Pressed Steel Housing, Self-Aligning, Heavy Gauge Type PBPH-BL - Series	Page 4
Bronze Bearing, Die-Cast Housing, Rigid Type PBDC-BR - Series	Page 4
Bronze Bearing, Pressed Steel Housing, Self-Aligning Type PBPS-BR - Series	Page 5
UHMW-PE Bearing, Solid-Rigid Type PBUH-UH - Series	Page 5
UHMW-PE Bearing, Pressed Stainless Steel Housing, Self-Aligning Type PBSS-UH - Series	Page 5
Replacement Parts	Page 5

FLANGE MOUNT

Ball Bearing, Die-Cast Housing, Rigid Type (2 Bolt) F2DC-BL - Series	Page 6
Ball Bearing, Pressed Steel Housing, Self-Aligning, Standard Type F2PS-BL Series	Page 6
Ball Bearing, Pressed Steel Housing, Self-Aligning, Heavy Gauge Type F2PH-BL - Series	Page 6
Bronze Bearing, Pressed Steel Housing, Self-Aligning Type F2PS-BR - Series	Page 6
UHMW-PE Bearing, Pressed Stainless Steel Housing, Self-Aligning Type F2SS-UH - Series	Page 6
Ball Bearing, Die-Cast Housing, Rigid Type (4 Bolt) F4DC-BL - Series	Page 7
UHMW-PE Bearing, Solid-Rigid Type (4 Bolt) F4UH-UH Series	Page 7
UHMW-PE Bearing, Solid-Rigid Type (2 Bolt) F2UH-UH - Series	Page 7

SLEEVE BEARINGS

Bronze Sleeve Bearings	Page 7
UHMW-PE Sleeve Bearings	Page 7

BEARING KIT – 9

This set installs or removes internal bushings & bearings with I.D. 1-5/16" to 1-3/4" and O.D. 1-7/16" to 1-7/8". Set contains 1 driver & 7 adapters.



BEARING KIT – 22

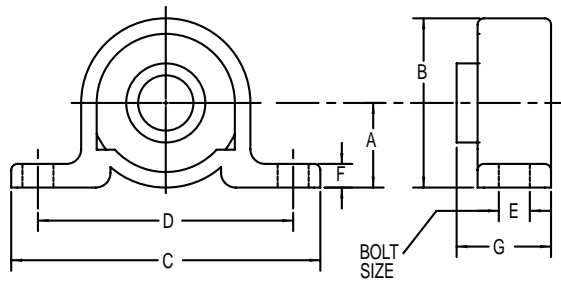
This set installs or removes internal bushings & bearings with I.D. 3/8" to 1-1/2" and O.D. 7/16" to 1-3/8". Set contains 3 drivers & 16 adapters.



BEARING KIT – 18

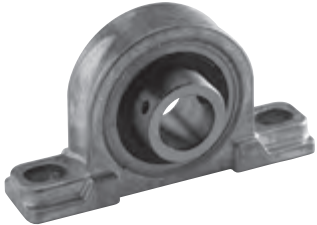
This set installs or removes internal bushings & bearings and will notpeen the bushing end, scratch or mar. Set contains 9 adapters for I.D. sizes 1/2" to 1" in increments of 1/16" maximum O.D. of 1-1/8".





BALL BEARING, DIE-CAST HOUSING, RIGID TYPE

Well suited for applications requiring strong load support in limited mounting area. Solid zinc die-cast housing, is non-corrosive and lightweight and securely retains bearing by pressing the lip 360 degrees over the outer race. Includes 2 set screws.



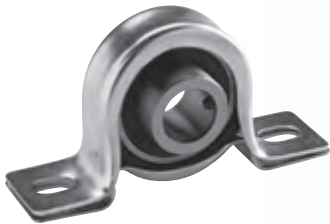
PBDC-BL - Series

Part No.	Bore Dia. (in.)	Load Capacity		A	B	C	D	E	F	G	Wt. Lbs.
		Dynamic (Lbs.)	Static (Lbs.)								
PBDC-BL-050	1/2	2877	1479	1 1/8	2 5/16	4 1/4	3 3/8	3/8	7/16	1 5/16	0.9
PBDC-BL-062	5/8	2877	1479	1 1/8	2 5/16	4 1/4	3 3/8	3/8	7/16	1 5/16	0.8
PBDC-BL-075	3/4	2877	1479	1 1/8	2 5/16	4 1/4	3 3/8	3/8	7/16	1 5/16	0.9
PBDC-BL-100	1	3153	1768	1 1/4	2 1/2	4 5/8	3 5/8	3/8	1/2	1 3/8	1.0

BALL BEARING, PRESSED STEEL HOUSING, SELF-ALIGNING, STANDARD TYPE

Two-piece housing has rust-proof plated finish. Bearing insert is encased in non-conductive, oil resistant rubber liner which corrects up to 2° misalignment while reducing vibration and noise.

Includes 2 set screws. (Ball bearing and rubber liner replaceable - see page 5.)



PBPS-BL - Series

Part No.	Bore Dia. (in.)	Load Capacity		A	B	C	D	E	F	G	Wt. Lbs.
		Dynamic (Lbs.)	Static (Lbs.)								
PBPS-BL-050	1/2	2152	1075	15/16	1 7/8	4 3/16	3 3/16	7/16	7/64	1 3/16	0.4
PBPS-BL-062	5/8	2152	1075	15/16	1 7/8	4 3/16	3 3/16	7/16	7/64	1 3/16	0.4
PBPS-BL-075	3/4	2877	1479	1 3/16	2 5/16	4 7/16	3 7/16	7/16	1/8	1 5/16	0.6
PBPS-BL-100	1	3153	1768	1 3/16	2 5/16	4 7/16	3 7/16	7/16	1/8	1 5/16	0.6

BALL BEARING, PRESSED STEEL HOUSING, SELF-ALIGNING, HEAVY GAUGE TYPE

Heavy gauge two-piece housing has rust-proof plated finish crimped together at bolt holes. Bearing insert with two set screws has longer inner race for added load support. Extra-thick non-conductive rubber liner corrects misalignment up to 2° while reducing vibration and noise.



PBPH-BL - Series

Part No.	Bore Dia. (in.)	Load Capacity		A	B	C	D	E	F	G	Wt. Lbs.
		Dynamic (Lbs.)	Static (Lbs.)								
PBPH-BL-050	1/2	2877	1479	1 5/16	2 5/8	4 7/16	3 7/16	7/16	9/64	1 11/16	1.0
PBPH-BL-062	5/8	2877	1479	1 5/16	2 5/8	4 7/16	3 7/16	7/16	9/64	1 11/16	0.9
PBPH-BL-075	3/4	2877	1479	1 5/16	2 5/8	4 7/16	3 7/16	7/16	9/64	1 11/16	0.7
PBPH-BL-100	1	3153	1768	1 1/2	2 7/8	5 3/16	4	1/2	9/64	1 7/8	1.1

BRONZE BEARING, DIE-CAST HOUSING, RIGID TYPE

Porous bronze sleeve bearing press-fit in solid zinc die-cast housing, non-corrosive and lightweight with oil hole for lubrication. For use in lighter duty applications. Tolerates -5° to 220° F.



PBDC-BR - Series

Part No.	Bore Dia. (in.)	Load Capacity		A	B	C	D	E	F	G	Wt. Lbs.
		Dynamic (Lbs.)	Static (Lbs.)								
PBDC-BR-050	1/2	Max. PV	50,000*	1	1 7/8	3 9/16	2 13/16	5/16	5/8	1 1/8	0.6
PBDC-BR-062	5/8	Max. PV	50,000*	1	1 7/8	3 9/16	2 13/16	5/16	5/8	1 1/8	0.5
PBDC-BR-075	3/4	Max. PV	50,000*	1	1 7/8	3 9/16	2 13/16	5/16	5/8	1 1/8	0.4

* To calculate the PV Factor see formula on page 2.

BRONZE BEARING, PRESSED STEEL HOUSING, SELF-ALIGNING TYPE

Two-piece housing has rust-proof plated finish. Can be mounted vertically or horizontally. Spring-lid oil cap can be positioned 4 ways. Porous flanged bronze bearings are press-fit in sturdy zinc die-cast sphere with felt strip for lubrication. Includes 2 rubber grommets to reduce noise and vibration. Tolerates -5° to 220° F. (Rubber grommets replaceable – see below.)

Part No.	Bore Dia. (in.)	Load Capacity	A	B	C	D	E	F	G	Wt. Lbs.
PBPS-BR-050	1/2	Max. PV 50,000*	1	2 3/32	4	3	7/16	9/64	1 1/8	0.5
PBPS-BR-062	5/8	Max. PV 50,000*	1	2 3/32	4	3	7/16	9/64	1 1/8	0.5
PBPS-BR-075	3/4	Max. PV 50,000*	1	2 3/32	4	3	7/16	9/64	1 1/8	0.5
PBPS-BR-100	1	Max. PV 50,000*	1	2 3/32	4	3	7/16	9/64	1 1/8	0.4



PBPS-BR - Series

UHMW-PE BEARING, SOLID-RIGID TYPE

Entire unit is UHMW-PE. USDA and FDA approved. -60° to 180° F temperature range. For wash down applications in wet or harsh environments or where sanitary conditions are a factor. Self-lubricating bearings resist corrosion, high impact and abrasion. Interchangeable with most metal units.

Part No.	Bore Dia. (in.)	Load Capacity	A	B	C	D	E	F	G	Wt. Lbs.
PBUH-UH-050	1/2	Max. PV 3,000*	1 3/16	2 3/16	4 3/4	3 3/8	7/16	5/8	1 1/2	0.4
PBUH-UH-062	5/8	Max. PV 3,000*	1 3/16	2 3/16	4 3/4	3 3/8	7/16	5/8	1 1/2	0.4
PBUH-UH-075	3/4	Max. PV 3,000*	1 5/16	2 1/2	5 1/4	3 3/4	7/16	5/8	1 1/2	0.4
PBUH-UH-100	1	Max. PV 3,000*	1 7/16	2 3/4	5 1/2	4	7/16	3/4	1 1/2	0.5



PBUH-UH - Series

UHMW-PE PRESSED STAINLESS STEEL HOUSING, SELF-ALIGNING TYPE

USDA and FDA approved. For wash-down applications in wet or harsh environments or where sanitary conditions are a factor. Self-lubricating bearings resist corrosion, high impact and abrasion. Two-piece stainless steel housing units. Interchangeable with most metal units. Tolerates -60° to 180° F. (UHMW-PE bearing replaceable – see below.)

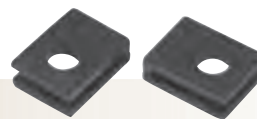
Part No.	Bore Dia. (in.)	Load Capacity	A	B	C	D	E	F	G	Wt. Lbs.
PBSS-UH-050	1/2	Max. PV 3,000*	1	2	4	3	7/16	1/8	1 1/8	0.3
PBSS-UH-062	5/8	Max. PV 3,000*	1	2	4	3	7/16	1/8	1 1/8	0.3
PBSS-UH-075	3/4	Max. PV 3,000*	1	2	4	3	7/16	1/8	1 1/8	0.2
PBSS-UH-100	1	Max. PV 3,000*	1	2	4	3	7/16	1/8	1 1/8	0.2



PBSS-UH - Series

* To calculate the PV Factor see formula on page 2.

REPLACEMENT PARTS



Ball Bearing Insert	UHMW-PE Bearing Insert	Rubber Liner	Rubber Grommets - set of 2
Part No. Rplc. Size	Part No. Rplc. Size	Part No. Rplc. Size	Part No. Rplc. Size
BL-050 1/2	UH-050 1/2	RB-062 1/2	RG-1000 Universal
BL-062 5/8	UH-062 5/8	RB-062 5/8	
BL-075 3/4	UH-075 3/4	RB-075 3/4	
BL-100 1	UH-100 1	RB-100 1	



F2DC-BL - Series



F2PS-BL - Series



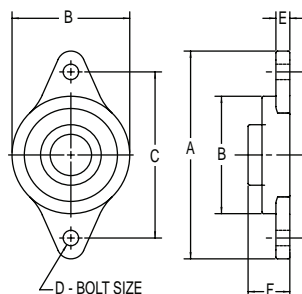
F2PH-BL - Series



F2PS-BR - Series



F2SS-UH - Series



BALL BEARING, DIE-CAST HOUSING, RIGID TYPE (2 BOLT)

Well suited for applications requiring strong load support in limited mounting area. Solid zinc die-cast housing is non-corrosive and lightweight and securely retains bearing by pressing the lip 360 degrees over the outer race. Includes 2 set screws.

Part No.	Bore Dia. (in.)	Load Capacity		A	B	C	D	E	F	Wt. Lbs.
		Dynamic (Lbs.)	Static (Lbs.)							
F2DC-BL-050	1/2	2152	1075	3 1/4	2	2 1/2	9/32 Sq.	1/2	1 1/16	0.4
F2DC-BL-062	5/8	2152	1075	3 1/4	2	2 1/2	9/32 Sq.	1/2	1 1/16	0.4
F2DC-BL-075	3/4	2877	1479	3 5/8	2 1/4	2 13/16	11/32 Sq.	1/2	1 1/8	0.6
F2DC-BL-100	1	3153	1768	3 7/8	2 1/2	3	11/32 Sq.	1/2	1 3/16	0.7

BALL BEARING, PRESSED STEEL HOUSING, SELF-ALIGNING, STANDARD TYPE

One-piece housing has rust-proof plated finish. Bearing insert is encased in non-conductive, oil resistant rubber liner which corrects up to 2° misalignment while reducing vibration and noise. Includes 2 set screws.

(Ball bearing and rubber liner replaceable - see page 5.)

Part No.	Bore Dia. (in.)	Load Capacity		A	B	C	D	E	F	Wt. Lbs.
		Dynamic (Lbs.)	Static (Lbs.)							
F2PS-BL-050	1/2	2152	1075	4	2	3	3/8	1/16	1	0.3
F2PS-BL-062	5/8	2152	1075	4	2	3	3/8	1/16	1	0.3
F2PS-BL-075	3/4	2877	1479	4 1/2	2 1/2	3 3/8	7/16	1/16	1 1/8	0.5
F2PS-BL-100	1	3153	1768	4 1/2	2 1/2	3 3/8	7/16	1/16	1 1/8	0.6

BALL BEARING, PRESSED STEEL HOUSING, SELF-ALIGNING HEAVY GAUGE TYPE

Heavy gauge one-piece housing has rust-proof plated finish. Bearing insert with two set screws has longer inner race for added load support. Extra-thick non-conductive rubber liner corrects misalignment up to 2° while reducing vibration and noise.

Part No.	Bore Dia. (in.)	Load Capacity		A	B	C	D	E	F	Wt. Lbs.
		Dynamic (Lbs.)	Static (Lbs.)							
F2PH-BL-050	1/2	2877	1479	5	3	4	7/16	3/32	1 3/4	1.0
F2PH-BL-062	5/8	2877	1479	5	3	4	7/16	3/32	1 3/4	1.1
F2PH-BL-075	3/4	2877	1479	5	3	4	7/16	3/32	1 3/4	0.9
F2PH-BL-100	1	3153	1768	5	3	4	7/16	3/32	1 3/4	1.0

BRONZE BEARING, PRESSED STEEL HOUSING, SELF-ALIGNING TYPE

Two-piece housing has rust-proof plated finish. Spring-lid oil cap is at 45° and can be mounted vertically or horizontally. Porous flanged bronze bearings are press-fit in sturdy zinc die-cast sphere with felt strip for lubrication. Includes 2 rubber grommets for mounting to reduce noise and vibration. Tolerates -5° to 220° F. (Rubber grommets replaceable - see below.)

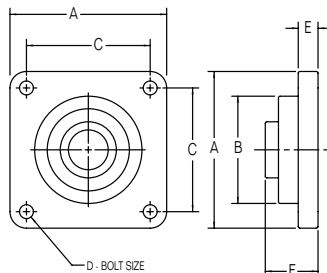
Part No.	Bore Dia. (in.)	Load Capacity		A	B	C	D	E	F	Wt. Lbs.
		Dynamic (Lbs.)	Static (Lbs.)							
F2PS-BR-050	1/2	Max. PV 50,000*		4 3/8	2 3/4	3 3/8	7/16	1/8	1 1/8	0.6
F2PS-BR-062	5/8	Max. PV 50,000*		4 3/8	2 3/4	3 3/8	7/16	1/8	1 1/8	0.6
F2PS-BR-075	3/4	Max. PV 50,000*		4 3/8	2 3/4	3 3/8	7/16	1/8	1 1/8	0.6
F2PS-BR-100	1	Max. PV 50,000*		4 3/8	2 3/4	3 3/8	7/16	1/8	1 1/8	0.4

UHMW-PE BEARING, PRESSED STAINLESS STEEL HOUSING, SELF-ALIGNING TYPE

USDA and FDA approved. -60° to 180° F temperature range. For wash down applications in wet or harsh environments or where sanitary conditions are a factor. Self-lubricating bearings resist corrosion, high impact and abrasion. Interchangeable with most metal units. Two-piece stainless steel housing units. (UHMW-PE bearing replaceable - see page 5.)

Part No.	Bore Dia. (in.)	Load Capacity		A	B	C	D	E	F	Wt. Lbs.
		Dynamic (Lbs.)	Static (Lbs.)							
F2SS-UH-050	1/2	Max. PV 3,000*		4 3/8	2 3/4	3 3/8	7/16	1/8	1 1/8	0.2
F2SS-UH-062	5/8	Max. PV 3,000*		4 3/8	2 3/4	3 3/8	7/16	1/8	1 1/8	0.3
F2SS-UH-075	3/4	Max. PV 3,000*		4 3/8	2 3/4	3 3/8	7/16	1/8	1 1/8	0.3
F2SS-UH-100	1	Max. PV 3,000*		4 3/8	2 3/4	3 3/8	7/16	1/8	1 1/8	0.3

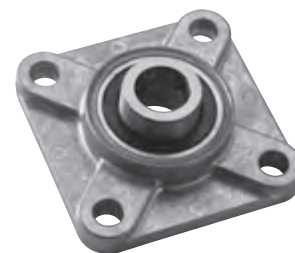
* To calculate the PV Factor see formula on page 2.



Ball Bearing, Die-Cast Housing, Rigid Type (4 Bolt)

Well suited for applications requiring strong load support in limited mounting area. Solid zinc die-cast housing in non-corrosive and lightweight and securely retains bearing by pressing the lip 360 degrees over the outer race. Includes 2 set screws.

Part No.	Bore Dia. (in.)	Load Capacity Dynamic (Lbs.)	Static (Lbs.)	A	B	C	D	E	F	Wt. Lbs.
F4DC-BL-050	1/2	2152	1075	3	1 13/16	2 1/8	3/8	3/8	1 1/32	0.6
F4DC-BL-062	5/8	2152	1075	3	1 13/16	2 1/8	3/8	3/8	1 1/32	0.7
F4DC-BL-075	3/4	2877	1479	3 3/8	2 1/8	2 1/2	3/8	7/16	1 1/8	0.9
F4DC-BL-100	1	3153	1768	3 3/4	2 5/16	2 3/4	7/16	7/16	1 1/4	1.2

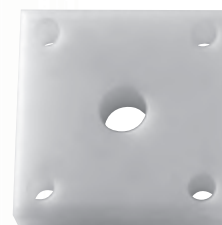


F4DC-BL - Series

UHMW-PE BEARING, SOLID-RIGID TYPE (4 BOLT)

Entire unit is UHMW-PE. USDA and FDA approved. -60° to 180° F temperature range. For wash down applications in wet or harsh environments or where sanitary conditions are a factor. Self-lubricating bearings resist corrosion, high impact and abrasion. Interchangeable with most metal units.

Part No.	Bore Dia. (in.)	Load Capacity	A	B	C	D	E	F	Wt. Lbs.
F4UH-UH-050	1/2	Max. PV 3,000*	3	--	2 1/8	7/16	--	1 1/4	0.4
F4UH-UH-062	5/8	Max. PV 3,000*	3	--	2 1/8	7/16	--	1 1/4	0.6
F4UH-UH-075	3/4	Max. PV 3,000*	3 3/8	--	2 1/2	7/16	--	1 1/4	0.6
F4UH-UH-100	1	Max. PV 3,000*	3 3/4	--	2 3/4	7/16	--	1 1/4	0.6

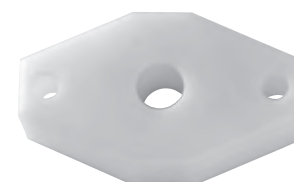


F4UH-UH - Series

UHMW-PE BEARING, SOLID-RIGID TYPE (2 BOLT)

Entire unit is UHMW-PE. USDA and FDA approved. -60° to 180° F temperature range. For wash down applications in wet or harsh environments or where sanitary conditions are a factor. Self-lubricating bearings resist corrosion, high impact and abrasion. Interchangeable with most metal units.

Part No.	Bore Dia. (in.)	Load Capacity	A	B	C	D	E	F	Wt. Lbs.
F2UH-UH-050	1/2	Max. PV 3,000*	4 7/16	2 1/2	3 9/16	7/16	--	1 1/2	0.5
F2UH-UH-062	5/8	Max. PV 3,000*	4 7/16	2 1/2	3 9/16	7/16	--	1 1/2	0.5
F2UH-UH-075	3/4	Max. PV 3,000*	4 7/16	2 1/2	3 9/16	7/16	--	1 1/2	0.5
F2UH-UH-100	1	Max. PV 3,000*	4 15/16	2 3/4	3 7/8	7/16	--	1 1/2	0.5



F2UH-UH - Series

* To calculate the PV Factor see formula on page 2.

BRONZE SLEEVE BEARINGS

Self-oiling, ideal for motors, pulleys, replacements, repair jobs, bore reducers, etc. Material is SAE 841. Maximum PV: 50,000 Temp. range -5° to 220° F



Part Number	I.D.	O.D.	Length
BSB-040512	1/4	5/16	3/4
BSB-040608	1/4	3/8	1/2
BSB-040616	1/4	3/8	1
BSB-060808	3/8	1/2	1/2
BSB-060816	3/8	1/2	1
BSB-081010	1/2	5/8	5/8
BSB-081018	1/2	5/8	1 1/8
BSB-081118	1/2	11/16	1 1/8
BSB-081218	1/2	3/4	1 1/8
BSB-101216	5/8	3/4	1
BSB-101218	5/8	3/4	1 1/8
BSB-121630	3/4	1	1 7/8



UHMW-PE SLEEVE BEARINGS

UHMW-PE provides durability & low friction. Self-lubricating ideal for wet or harsh environments or where wash-down is required for applications involving slow rotating or linear motion. USDA/FDA approved. Maximum PV: 3000 Temperature range -60° to 180° F.

Part Number	I.D.	O.D.	Length
USB-040608	1/4	3/8	1/2
USB-060808	3/8	1/2	1/2
USB-081010	1/2	5/8	5/8
USB-081016	1/2	5/8	1
USB-081216	1/2	3/4	1
USB-101212	5/8	3/4	3/4
USB-121616	3/4	1	1
USB-162016	1	1 1/4	1

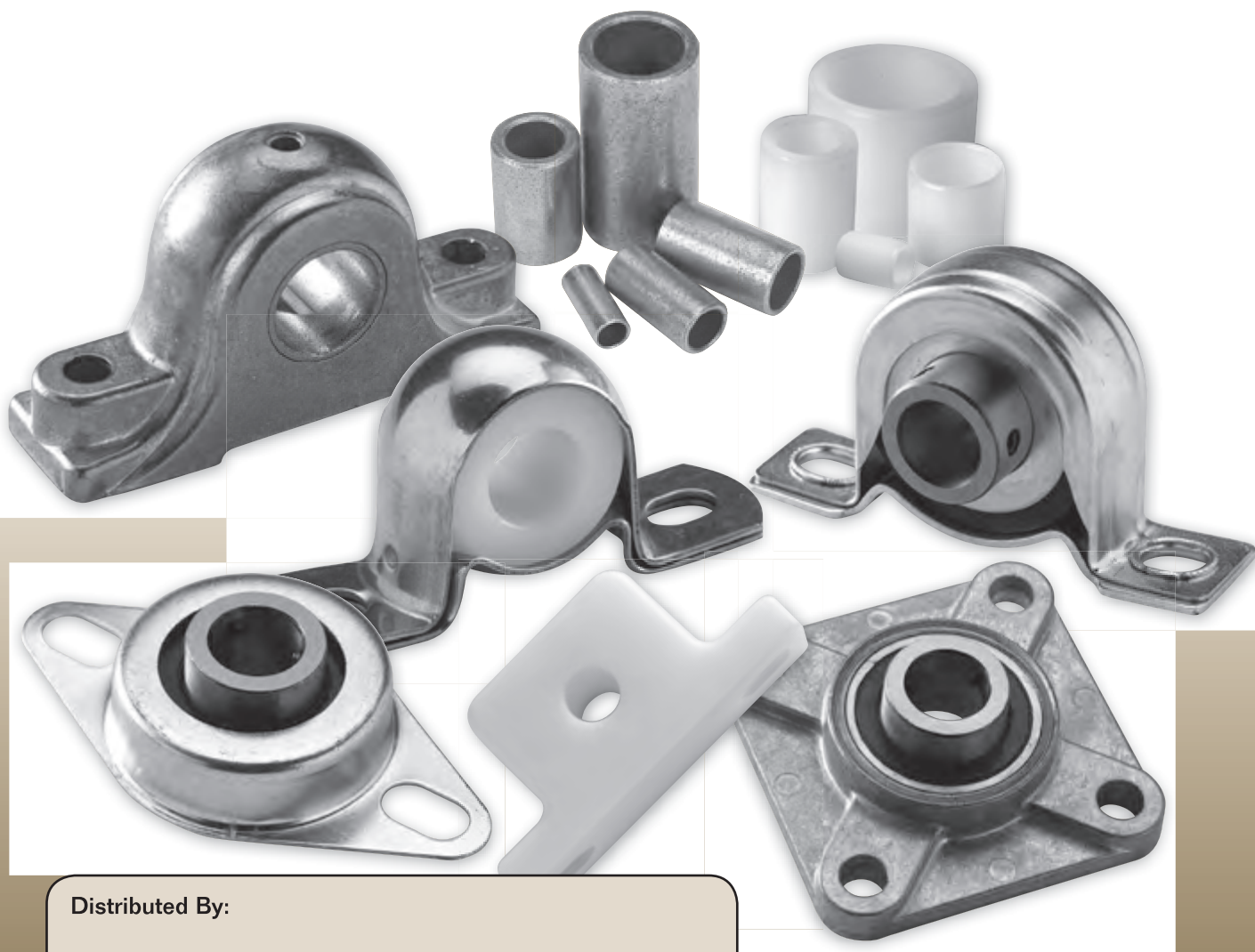
www.clesco.com

Phone: 1-800-542-6552 Fax: 1-800-860-5553



CLESCO BEARINGS

30202 Lakeland Blvd.
Wickliffe, Ohio 44092
Phone: 1-800-542-6552
Fax: 1-800-860-5553
www.clesco.com



Distributed By:

Catalog No. CLES2009
5M0109VPS